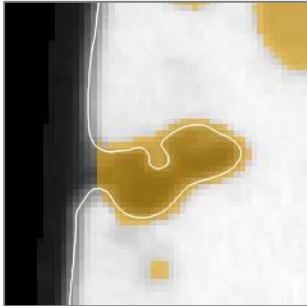


Get to know your defects

VGSTUDIO MAX Working from Home—Advanced Porosity/Inclusion Analysis

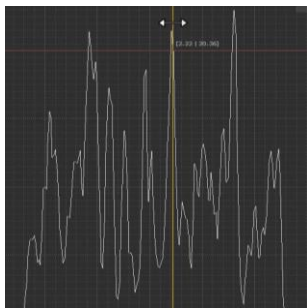
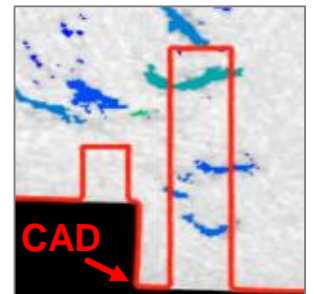


Mind the gap: Overall closing

- Use **Overall closing** setting to include defects connected to the surrounding air
- Closing with specified number of voxels
- Use **Preview** to evaluate your settings.

Count me in: Edge distance calculation

- Enables you to assess the relevance of porosity for the final machined part.
- Use aligned nominal object e.g. a CAD as reference
- Pores are classified as inside, outside or cut by the surface contour of the reference object



Slice by slice: Directional variability

- Variability of porosity with respect to the specified analysis direction
- Quickly identify and investigate slices with maximum porosity

The big picture: Porosity calculation

- Calculate and visualize area porosity to find nests of defects
- Use **Hot spot** threshold to identify areas of particularly high porosity
- Adjust **Porosity colors** settings to fine-tune the visualization of area porosity

