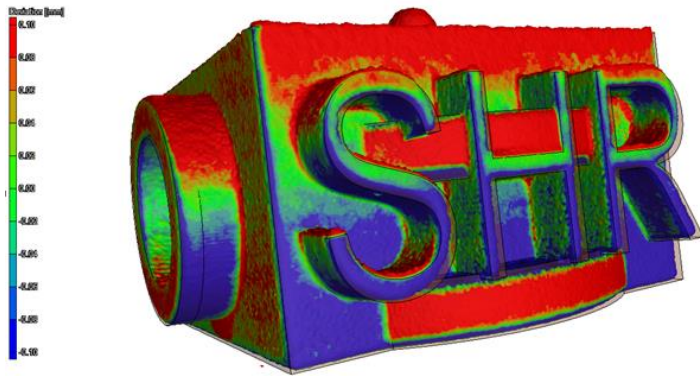


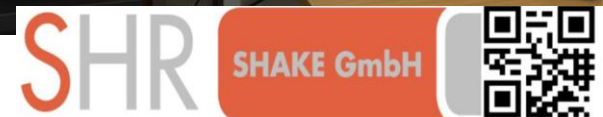
SHAKE GmbH

HYBRID CT 130

Next step in CT scanning technology



Referent:
Dipl.-Ing. Lutz Mordhorst
SHAKE H GmbH



SHAKE GmbH | Phone: +49 431 541166 | mail@shake-gmbh.de | www.shake-gmbh.de

SHAKE HYBRID CT

Next step in CT scanning technology

Output base CT application, - parameter time and color

- In the classical industrial CT application, the parameters of time and color have not been satisfactorily solved or color can only be achieved by means of assignment to grayscale.

For the time parameter, the questionable 4D-CT is used in the CT application

Solution Hybrid CT systems

Hybrid CT offers a solution that can achieve a considerable amount of innovation thanks to the use of additional sensors such as strip light projection.

Already by the integration a simple and favorable strip light scanner

If a highly accurate SHR Shake 3D CT is able to produce the 3D structure as an object code including color information of the patterned workpiece within a few seconds.

Even a few images with overlapping image windows produce a colored 3D image and the data set in seconds.

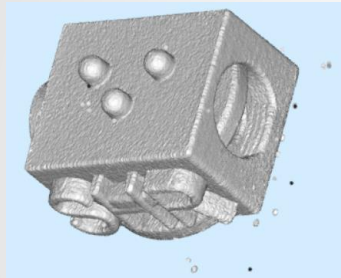
Patent in application



SHAKE HYBRID CT

Next step in CT scanning technology

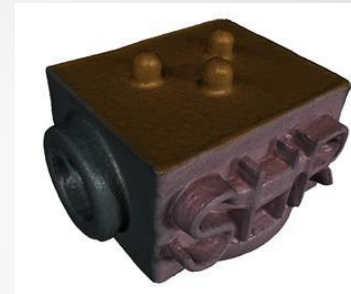
Computertomographen



- Quick
- Colour
- Accure
- Complicated Geometry
- Inner Contures

-
-
+
+
+

Streifenlichtprojektion



+
+
-
-
-

➔ Solution Hybrid CT

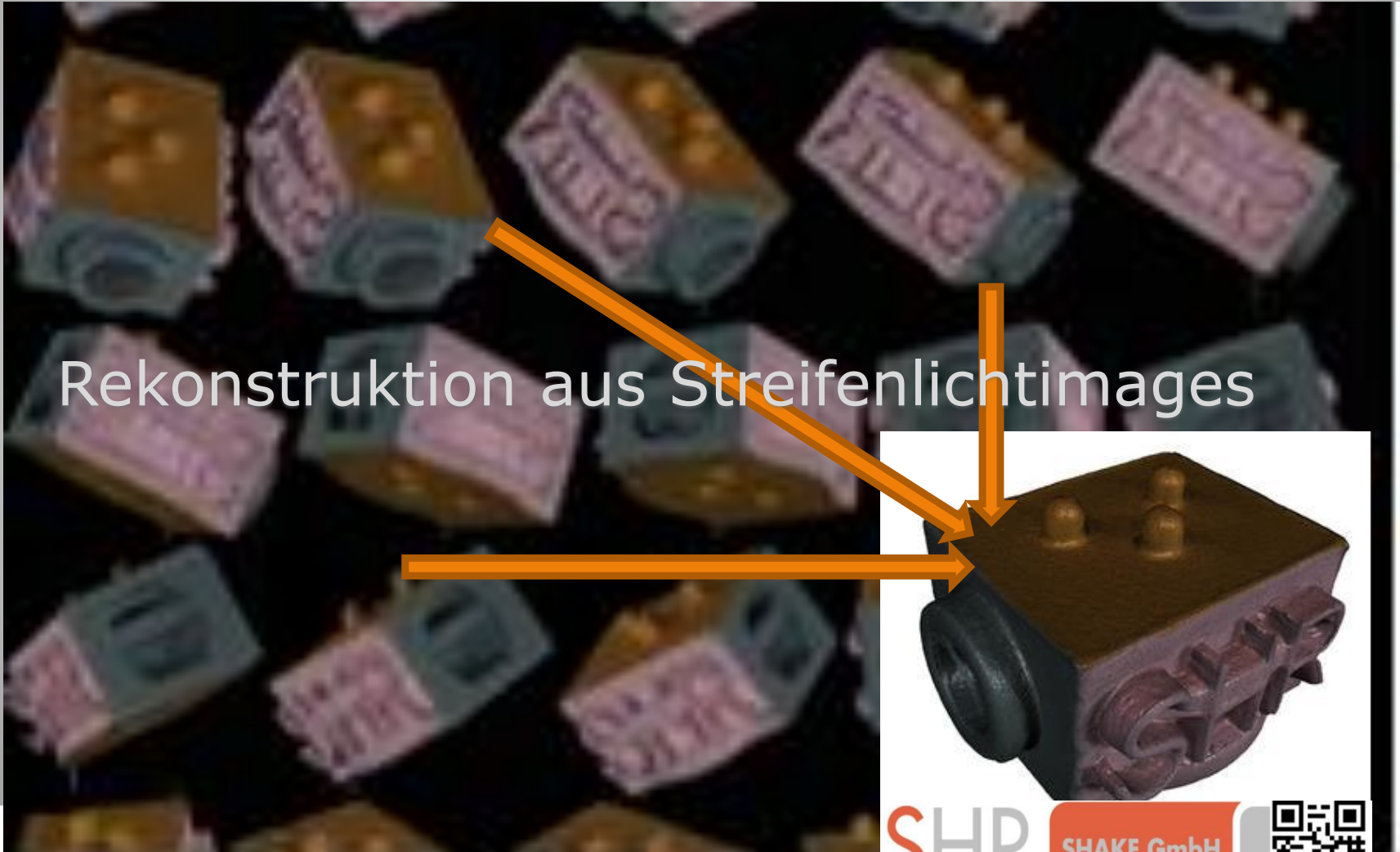
SHR

SHAKE GmbH



SHAKE HYBRID CT

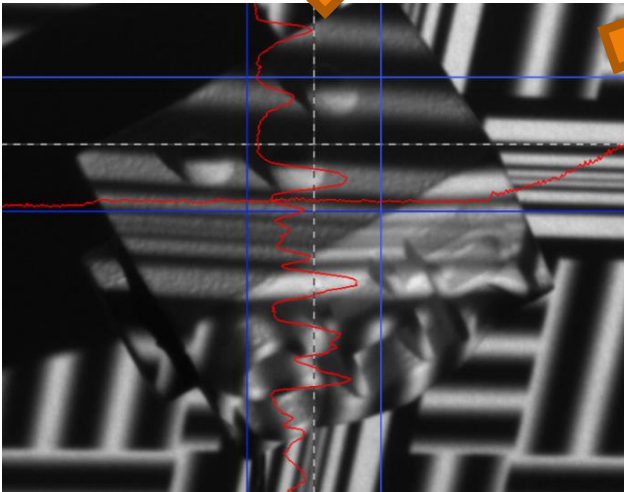
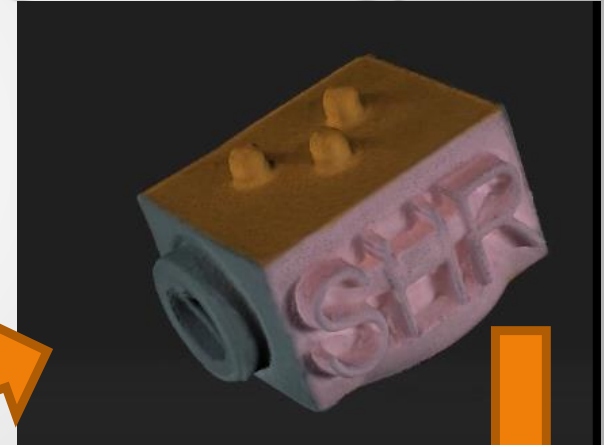
Next step in CT scanning technology



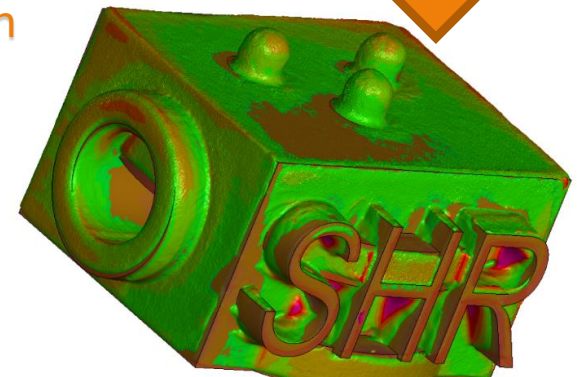
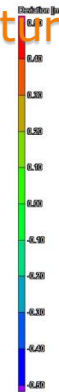
Rekonstruktion aus Streifenlichtimages

SHAKE HYBRID CT

Next step in CT scanning technology



Messen Soll-Ist-Vergleich
Aussenkonturen

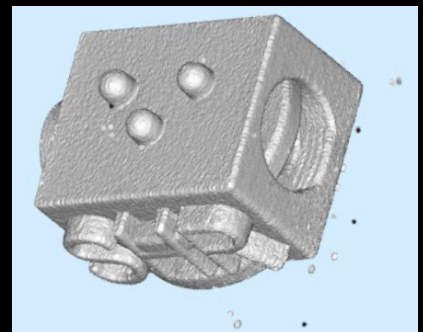
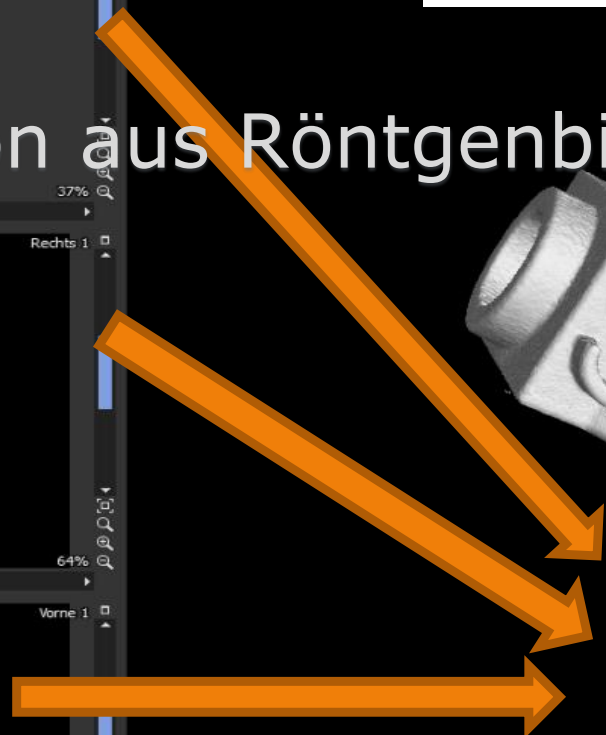
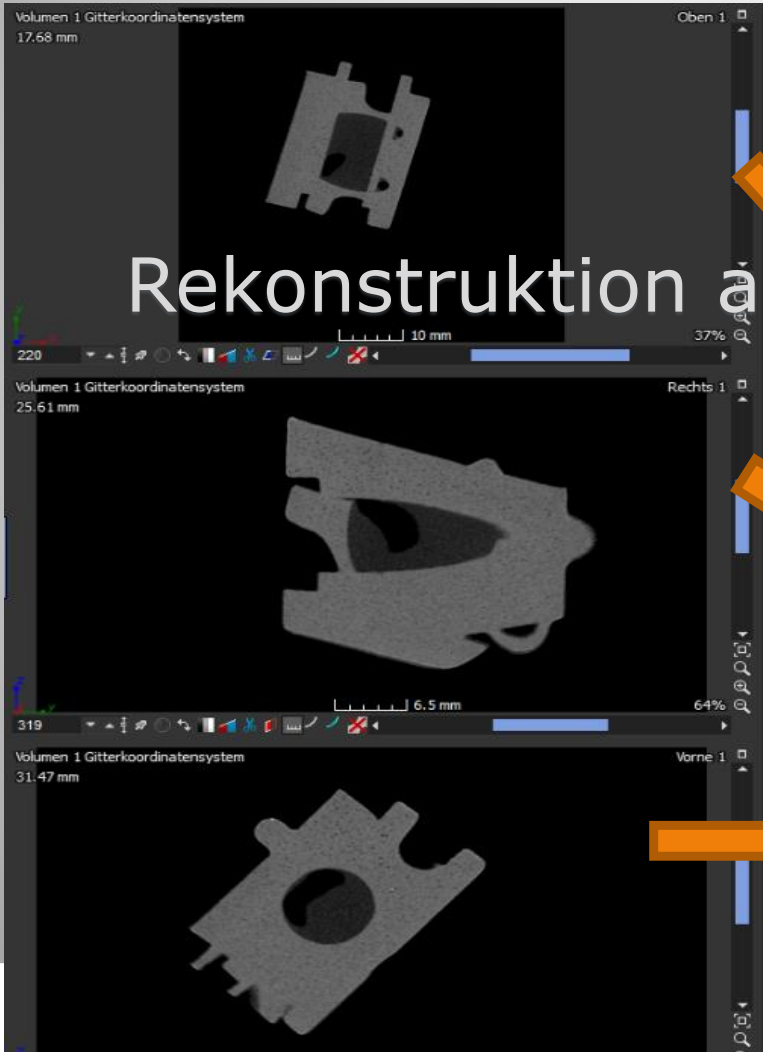


SHAKE HYBRID CT

Next step in CT scanning technology



Rekonstruktion aus Röntgenbildern

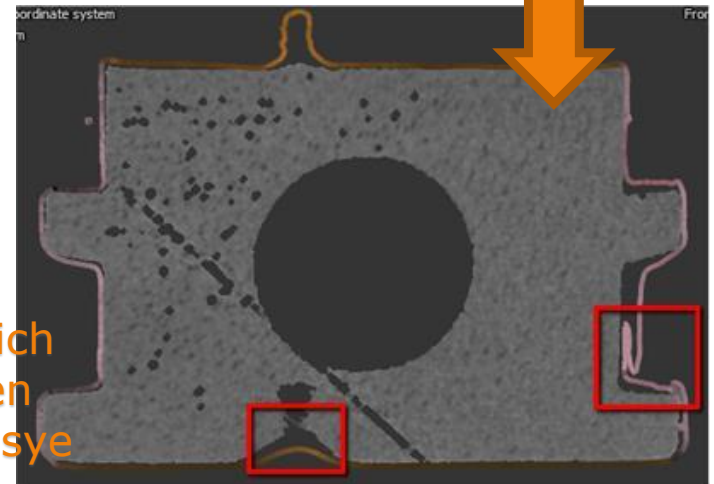


SHAKE HYBRID CT

Next step in CT scanning technology



Messen
Soll-Ist-Vergleich
Aussenkonturen
Werkstückanalyse



SHAKE GmbH HYBRID CT Next step in CT scanning technology

Outlook: Hybrid CT systems

For simple evaluations such as the alignment for the X - ray diffraction of Components in an associated orientation, it is thus possible to turn the workpiece to the coordinate in a matter of seconds. The analysis of the void or measurement of internal structures at this position is then immediately possible.

Patent in application

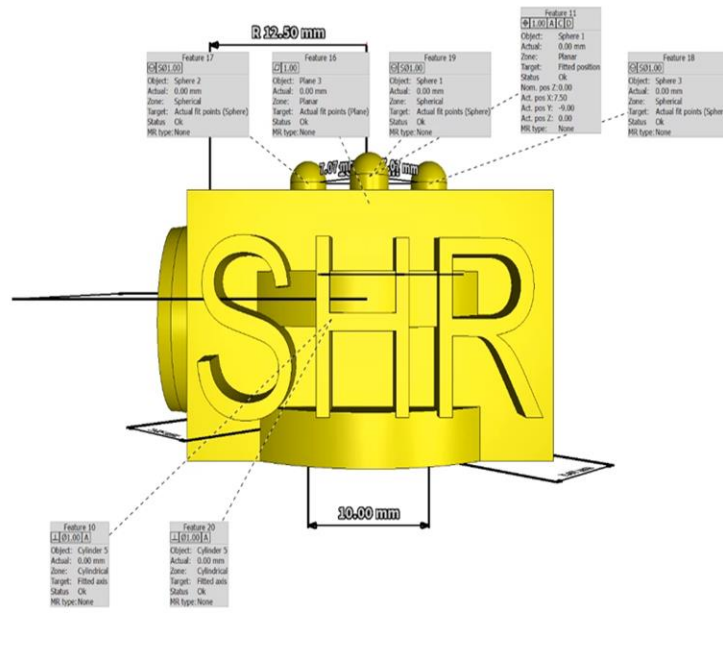
For the combination of these data a powerful software package is necessary which is on the one hand able to read the CT data as well as the data eg object code

Merge to remain in a coordinate system.

Further processing of the data should also be possible in this program.

This is possible with VolumeGraphics

CAD-Data



NEW SHAKE Hybrid CT

Next step in scanning technology

SHR

SHAKE GmbH



Coloured Pictures STL Model



SHAKE Software

SHR Viewer

SHR Commander

SHR 3 D Controller

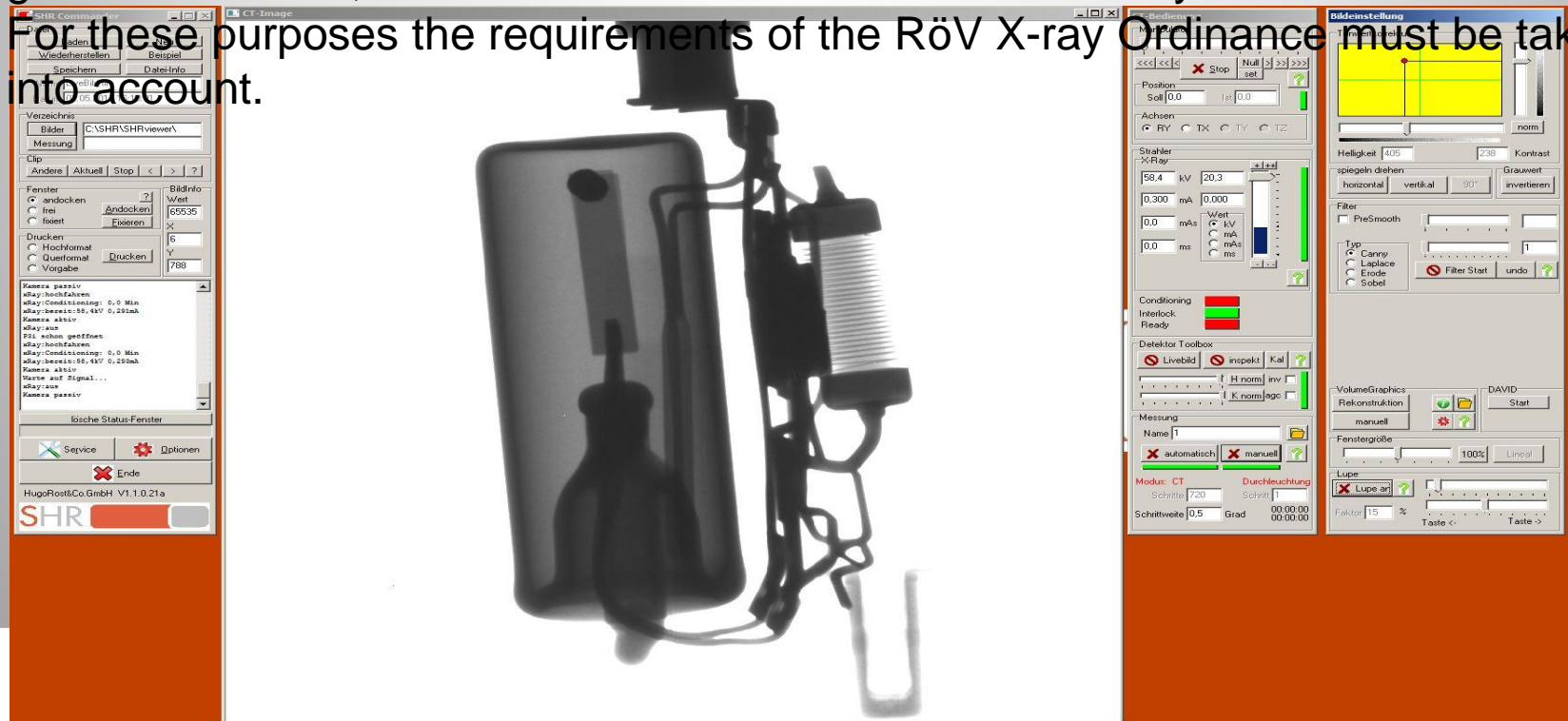
SHR

SHAKE GmbH



For industrial X-ray and CT systems, an optimal communication between generator control, detector and central control is necessary.

For these purposes the requirements of the RÖV X-ray Ordinance must be taken into account.



SHR X-Ray Life „ SHR-Fast-Imaging“

SHAKE SHR Software

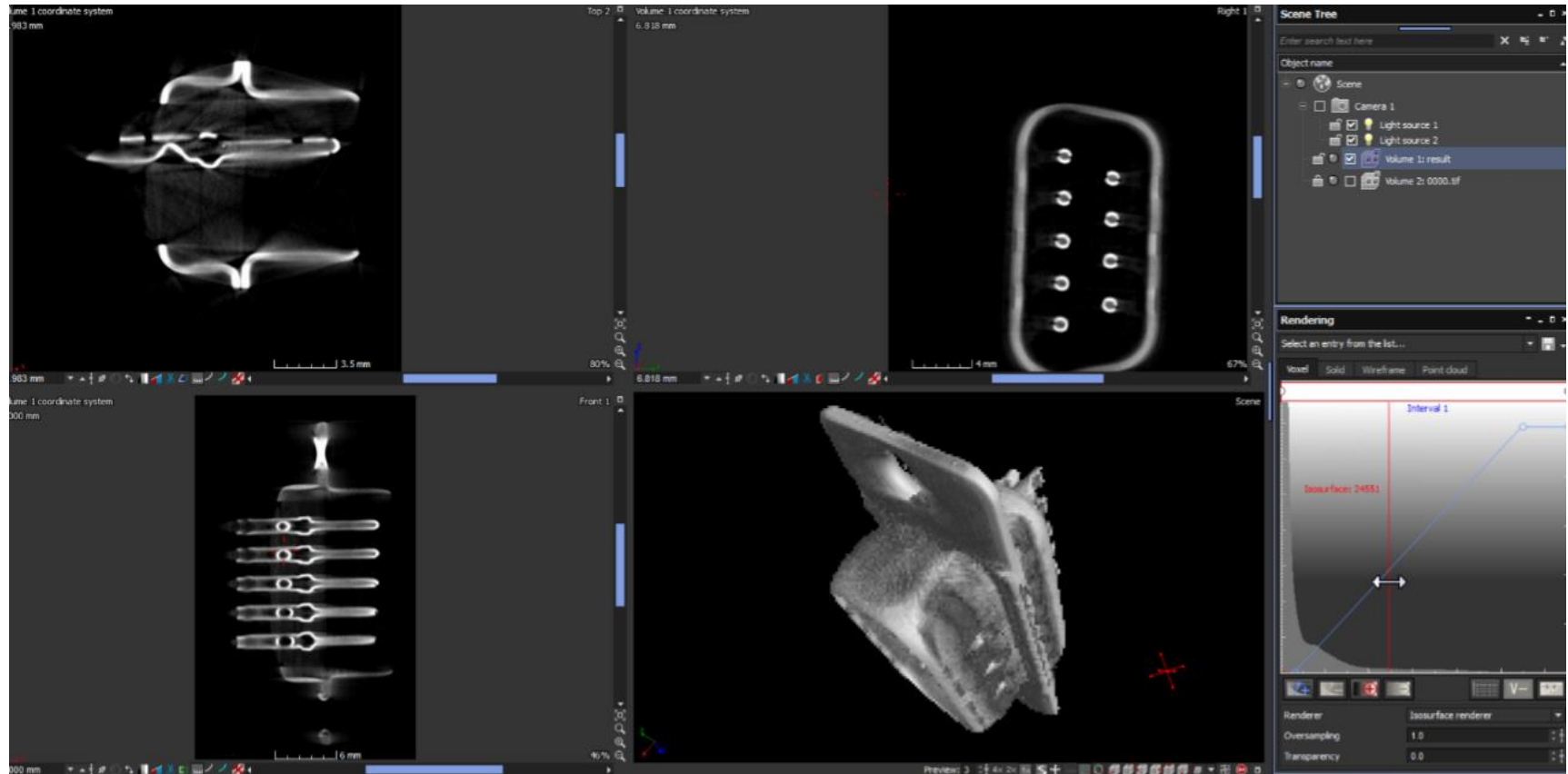
SHR Viewer

SHR Commander

SHR 3 D Controller



SHR 2D-Viewer 3D-Voxelmaker



SHAKE GmbH | Phone: +49 431 541166 | mail@shake-gmbh.de | www.shake-gmbh.de



Products

SHR

SHAKE GmbH



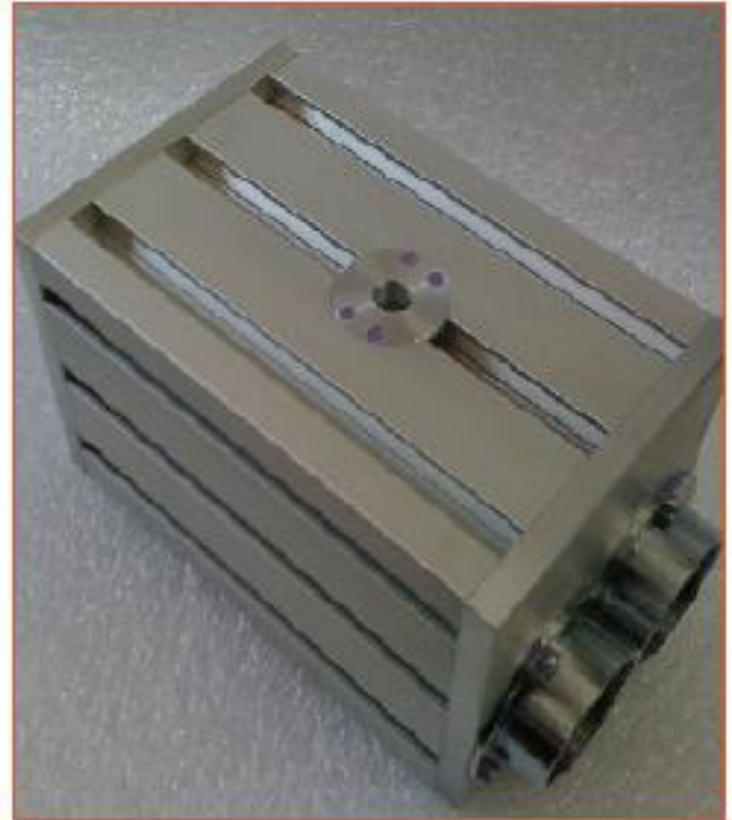
14

X-Ray-Systems
Computertomographen

Sensors
X-Ray-Beamer



SHR 3D CT 50 / 70 / 90



X-Ray Beamer SHR S 60 bis 150 KV



SHR 3D CT 130



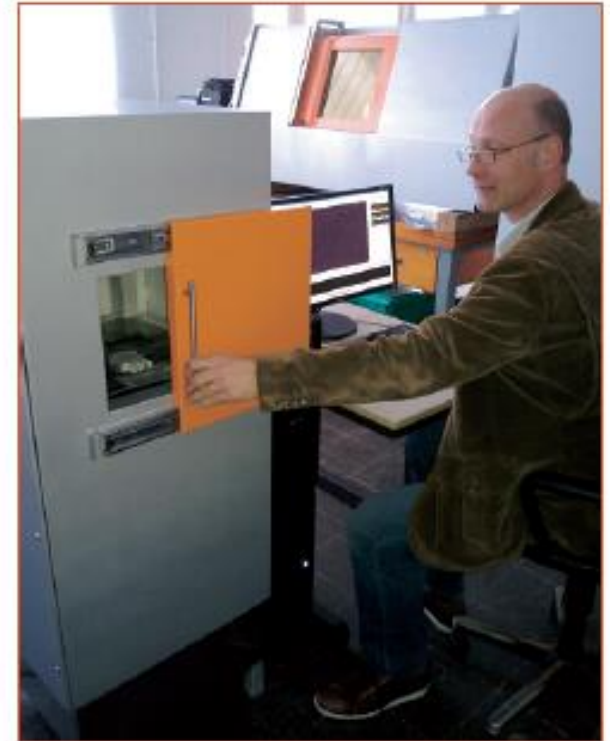
SHR 3D CT 160



SHR D400 x 400



SHR RoWi-X



SHR 2D V50/70/90

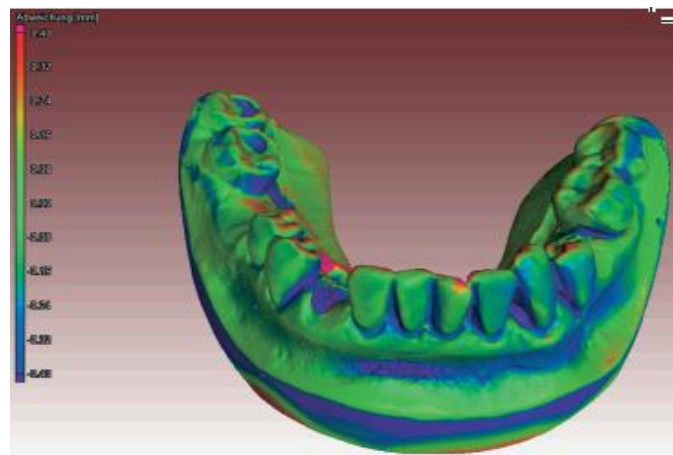
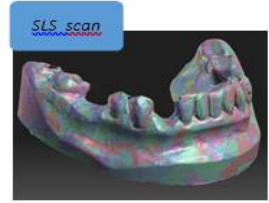
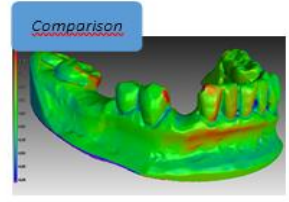
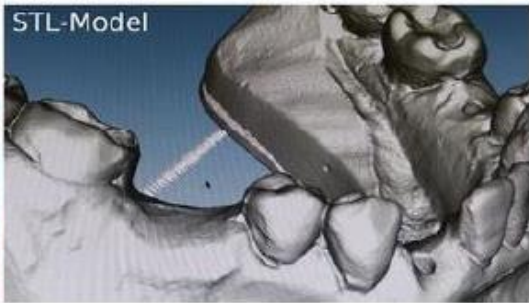
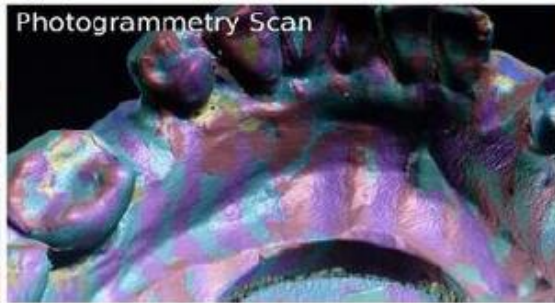
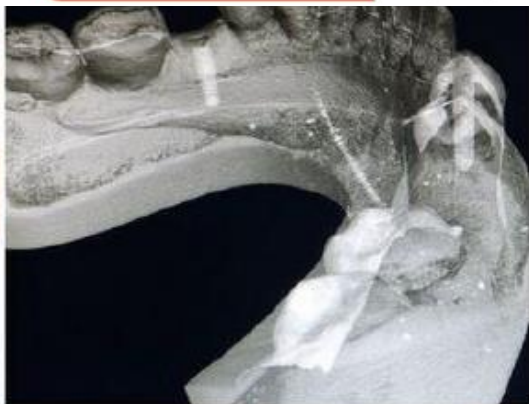
SHR

SHAKE GmbH



Computertomograph SHAKE SHF SHR

for workpiece analysis and 3-D-measurement



Explanation:
SHAKE CT SHR 130 + SLS is designed for three-dimensional measurement and work piece analysis as well as it is designed for crack-finding.

With the 3-D-X-ray-system it is possible to ray through objects with a diameter up to 100 mm.

SHAKE Hybrid CT SHR

SHAKE GmbH



Referent:

Dipl.-Ing. Lutz Mordhorst

SHAKE H GmbH