

# A new layer to data

VGSTUDIO MAX Working from Home—Regions of interests (ROIs)

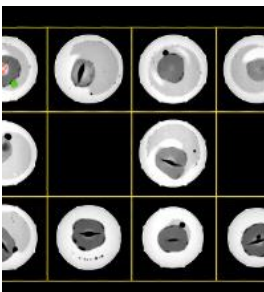
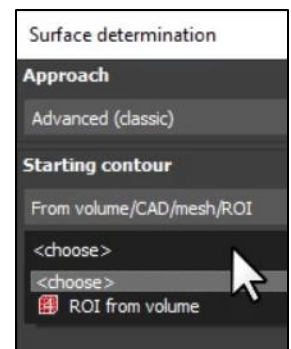


## The world of ROIs: ROI handling

- Enable ROI rendering for each ROI individually
- Set the transparency of the volume to 100 and the transparency of the ROI to 0 to see changes live
- When created, ROIs inherit rendering settings from the volume

## Cleaning duty: Starting contour

- Use an initial surface determination to create an ROI of your object
- Clean up with certain functions (e.g., **Polyline 3D**) to remove unwanted areas
- Perform a new surface determination based on this ROI as starting contour



## Follow the trail: Paste pattern of ROIs

- Pre-determine the spacing between the repeated pattern
- Prepare all analyses on your ROI before pasting the pattern
- Use **Update all analyses** to automatically calculate the analyses on all copied ROIs

## Tunnel vision: Extract ROI

- Use **Extract ROI** to work on only a small part of your object
- Make sure to dilate your ROI before extraction to include some air around your object, which is essential for surface determination, analyses and visualization

